

1. A New University Library

The University of Bristol has submitted the major planning application for the new Library and surrounding external public spaces. This application is available to view and comment on via the Council's planning portal, reference 20/00433/F or email: development.management@bristol.gov.uk

Overview

The new University library will be built on the site of The Hawthorns, at the corner of Woodland Road and Elton Road. It forms a key part of the University's vision and strategy for transforming the Clifton campus, which includes providing new and enhanced facilities, improvements to public spaces and creating a welcoming heart to the University for students, staff and the wider community.

The new University library will be a stimulating and nurturing learning environment providing world-class academic facilities that foster innovation in teaching, student attainment and new research partnerships. The building will accommodate learning and research space with capacity for approximately 420,000 books and 70,000 journals and new study seats.

The architecturally significant building features a

stepped design to integrate with the surrounding buildings. It will meet high sustainability standards with a focus on natural light, a high level of energy efficiency and low environmental impact.

Welcoming the public

The ground floor will be fully open to the public and is designed to be accessible to all.

The new University library will welcome students, staff and Bristol's communities by opening up the University's world-class cultural collections. This includes the nationally renowned Theatre Collection alongside ground floor exhibition galleries and café.

The cultural collections will be supported by a year-round programme of exhibitions and events open to everyone in the City and beyond.

Improvements to the public space

The plans also include a new civic square aimed at making the surrounding area safer, more attractive and accessible to all.

These plans replace the previous proposals and planning application for the closure and public realm enhancement scheme for Tyndall Avenue, that was

submitted to Bristol City Council in November 2017.

Following extensive consultations and feedback, plans for pedestrianisation have changed. They now include a new civic square, a pedestrianised area between Senate House and the new University Library (currently the Hawthorns site), introduced to improve traffic flow and public transport, enhance the pedestrian and cycling routes, and to make the whole area safer and accessible for everyone.

Other changes as a result of the public consultation include keeping Tyndall Avenue open to two-way traffic and arrangements to enable better traffic management measures for coach drop off and pick up.

Within these plans is a proposed scheme to provide fully accessible/inclusive access to the new food court and café in Senate House for use by the public, students, staff and visitors. It is within the site of Senate House and does not affect the existing roads and pathways. This application is being considered separately and is available to view and comment, reference 20/00197/F



View from Royal Fort Gardens looking North

2. Innovative and Forward Thinking

Our vision is to create a world-class library, at the heart of the campus, that reflects the University and the City's proud tradition of academic excellence with an innovative, forward thinking spirit.

A library is a space for connection with ideas and with others. It is the place where people meet, read, think, research, share, create new ideas and make new discoveries. A library lies at the heart of a university education and research endeavour. The possibility of a new modern university library here at Bristol opens the potential to offer even more. The project objectives are:

Supporting well-being

The latest innovations in library design theory and practice are being incorporated to ensure the new University library best supports the well-being of our staff, students and visitors. Spaces will maximise natural light and views, to provide a sense of relaxation and support, particularly for our students who study for extended hours.

Inspirational

The architecture will seek to delight and inspire innovation and discovery. It will be a building with spaces that create opportunities for intellectual pursuit and forward thinking. Access for all to the rich and unique Cultural Collections will provide further opportunities to engage with the City and beyond.

Inclusive and accessible

The new University library will be welcoming to all creating an environment where diversity is valued and everyone feels supported. All aspects of the building will support access for all and the design includes a 'Changing Places' toilet facility, designed to meet the needs of people who cannot use standard accessible toilets. This facility is one of only a few in Bristol.

Adaptable

The building will seamlessly adapt to new and changing ways of learning and research, and will accommodate new technologies and services as they develop throughout the life of the building.

Built to last, sustainable and contextual

The building is being designed to meet the highest sustainability standards to ensure the project is fit for the future. The design approach considers use of resources, impact on the environment, benefits to the community, well-being and connectivity.

The building will provide a secure place to study and work. As the site sits within a Conservation Area the design takes account of and is sensitive to its surroundings whilst offering a flagship new building that excites the senses and celebrates the value of education and research.



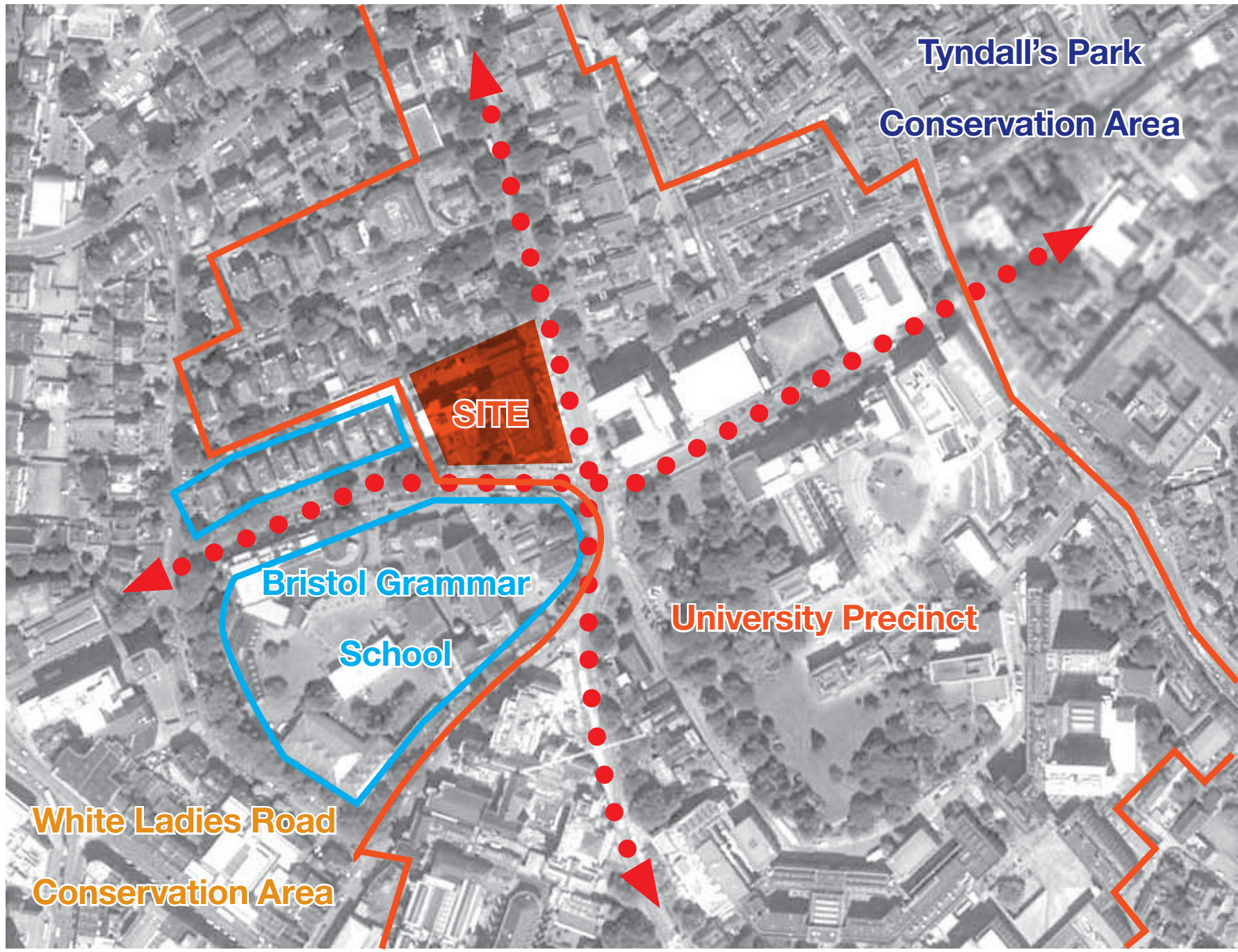
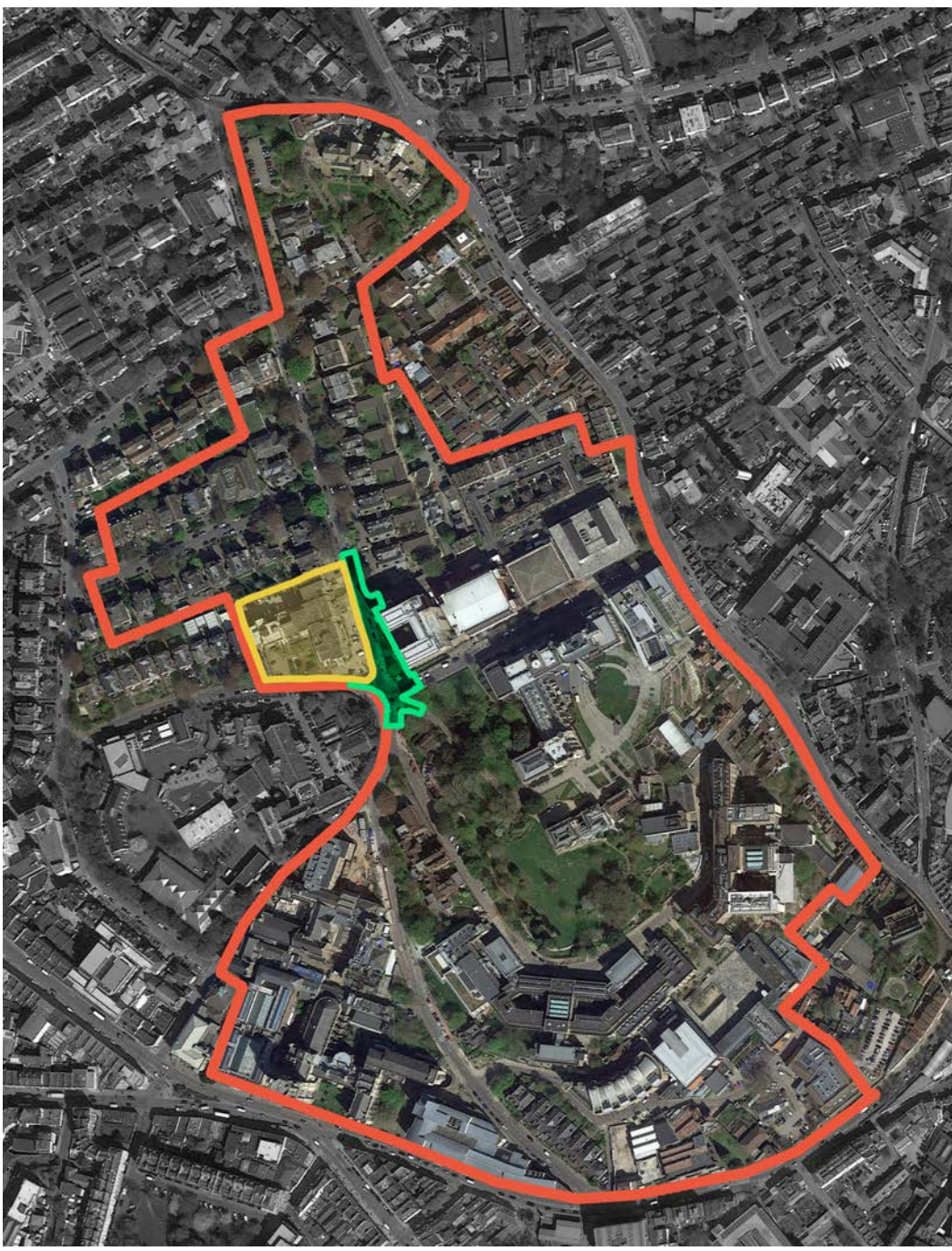
View from Elton Road looking East

3. Site and Context

The Hawthorns site occupies a corner plot at the junction of key streets, with the Bristol Grammar School and University properties as direct neighbours.

Relevant planning policy designations relate to the site's location within the City Centre Boundary, the St Michael's City Centre Neighbourhood and the University Precinct.

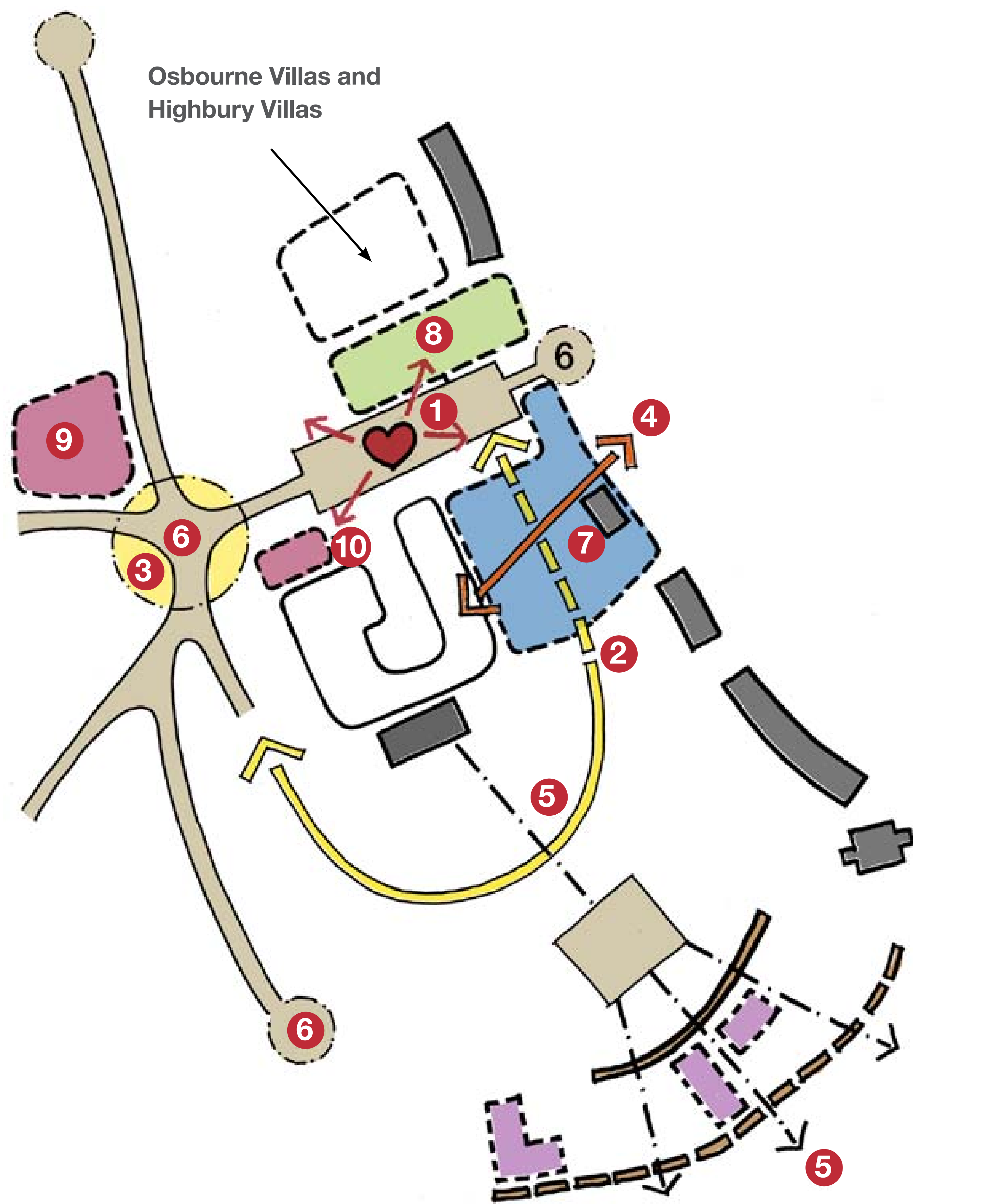
In relation to heritage the site is within the Whiteladies Road Conservation Area and opposite the Tyndall's Park Conservation Area. Adjacent listed buildings include the Bristol Grammar School, Wills Physics Laboratory and Royal Fort gates. The current building is considered to detract from the heritage setting.



The Hawthorns site and associated public realm improvements located within the University Precinct

The University of Bristol's 'Strategic Masterplan SPD11' was adopted by the local planning authority in 2006. It focusses on ten key strategic moves (listed below) for development of the University precinct and provides an integrated access and movement strategy. Our proposed plans fulfil a number of the ambitions of this masterplan.

- 1 To make Tyndall Avenue the social heart of the University
- 2 To continue and 'complete' University Walk on the east side of the Precinct
- 3 To create a new, identifiable entrance to the University at 'Tyndall Avenue Public Realm'
- 4 To create new routes, views and vistas from St Michael's Hill to Royal Fort Gardens
- 5 To create new links between the University and the City
- 6 To improve the public realm in order to strengthen the identity of the Precinct
- 7 To provide a new department of Life Sciences on the east side of the precinct
- 8 To create facilities for a New Learning Centre on the site of the existing Arts Library and IT Centre
- 9 To re-develop The Hawthorns site
- 10 To provide a new building adjacent to the Lodge site

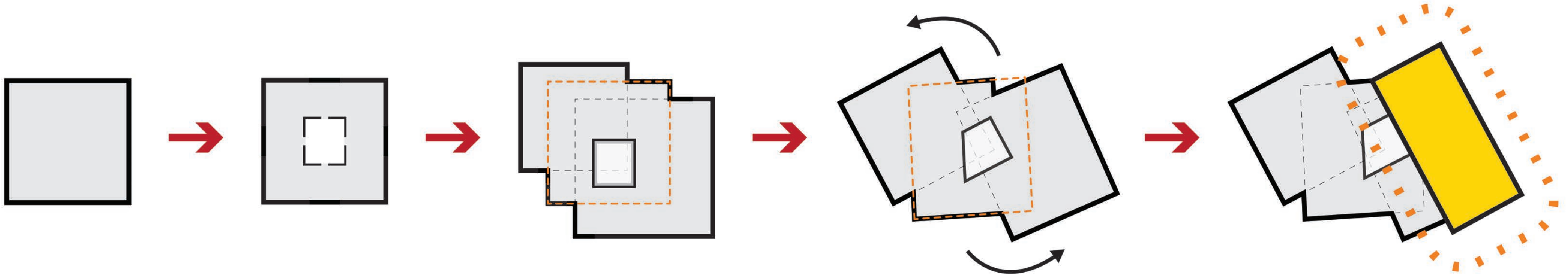


4. Design Principles

The new University library is a symbol and place of knowledge exchange, innovation and ideas. The building will be visible across the City complementing other landmarks. Large picture windows and a publicly accessible ground floor will welcome all into the heart of the building.

Relationships

The new University library provides a bridge between the scale of neighbouring Victorian villas and the form of Senate House. The design concept has taken the module of the villas and stacked, twisted and developed the shape and scale to create a building that matches Senate House in height and status. The resulting interplay of spaces sets up a dialogue between the new University library and the City.



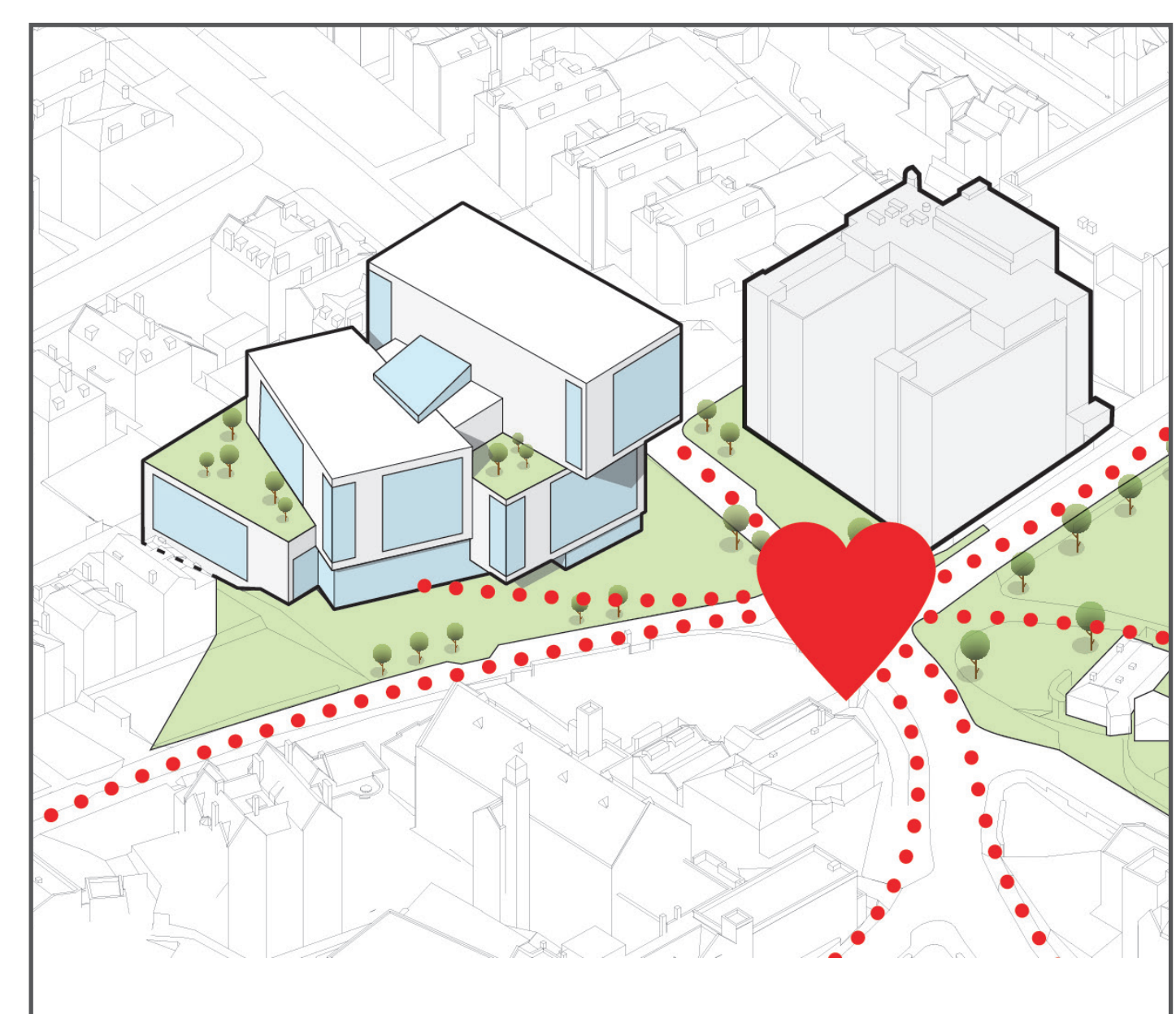
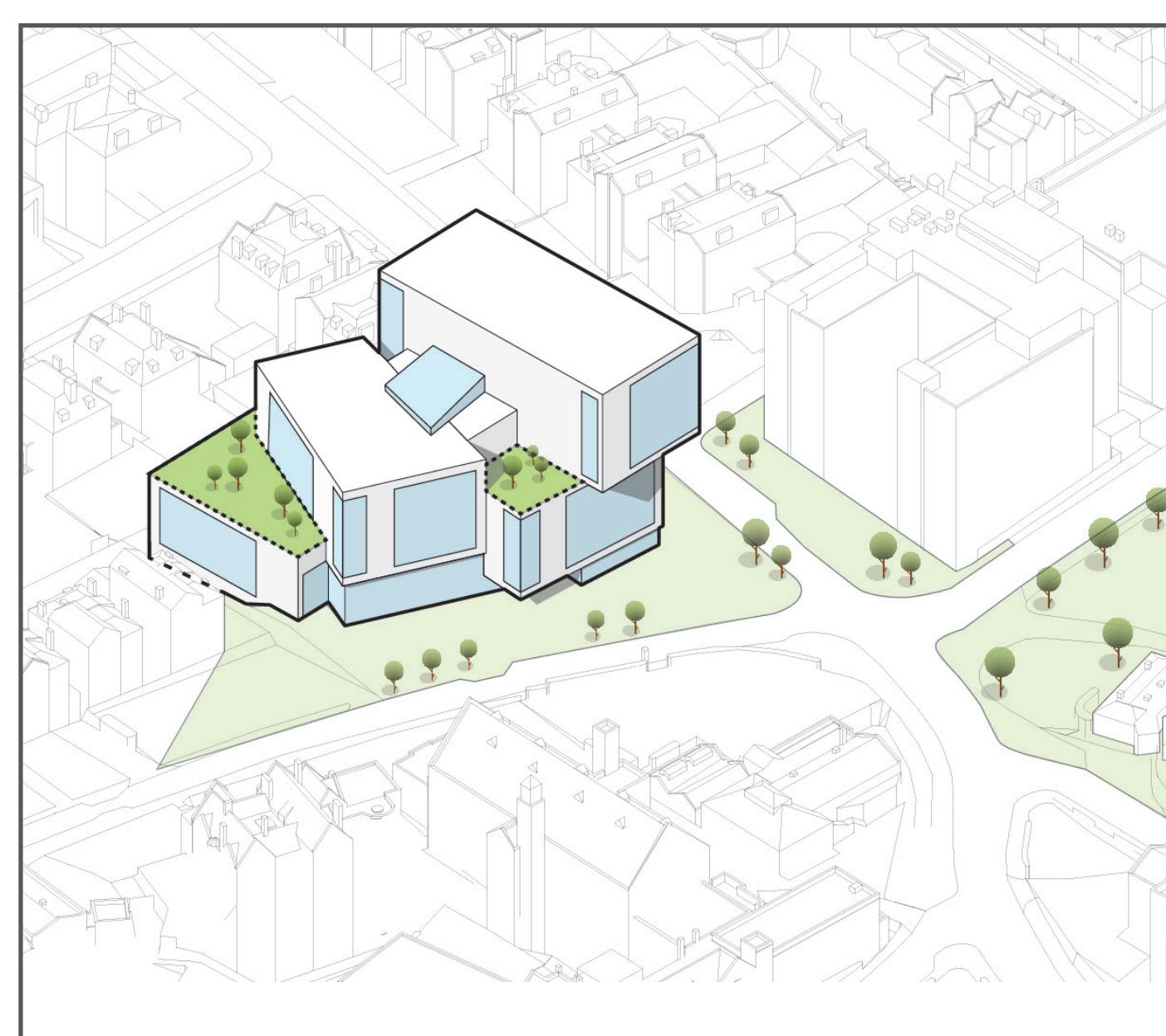
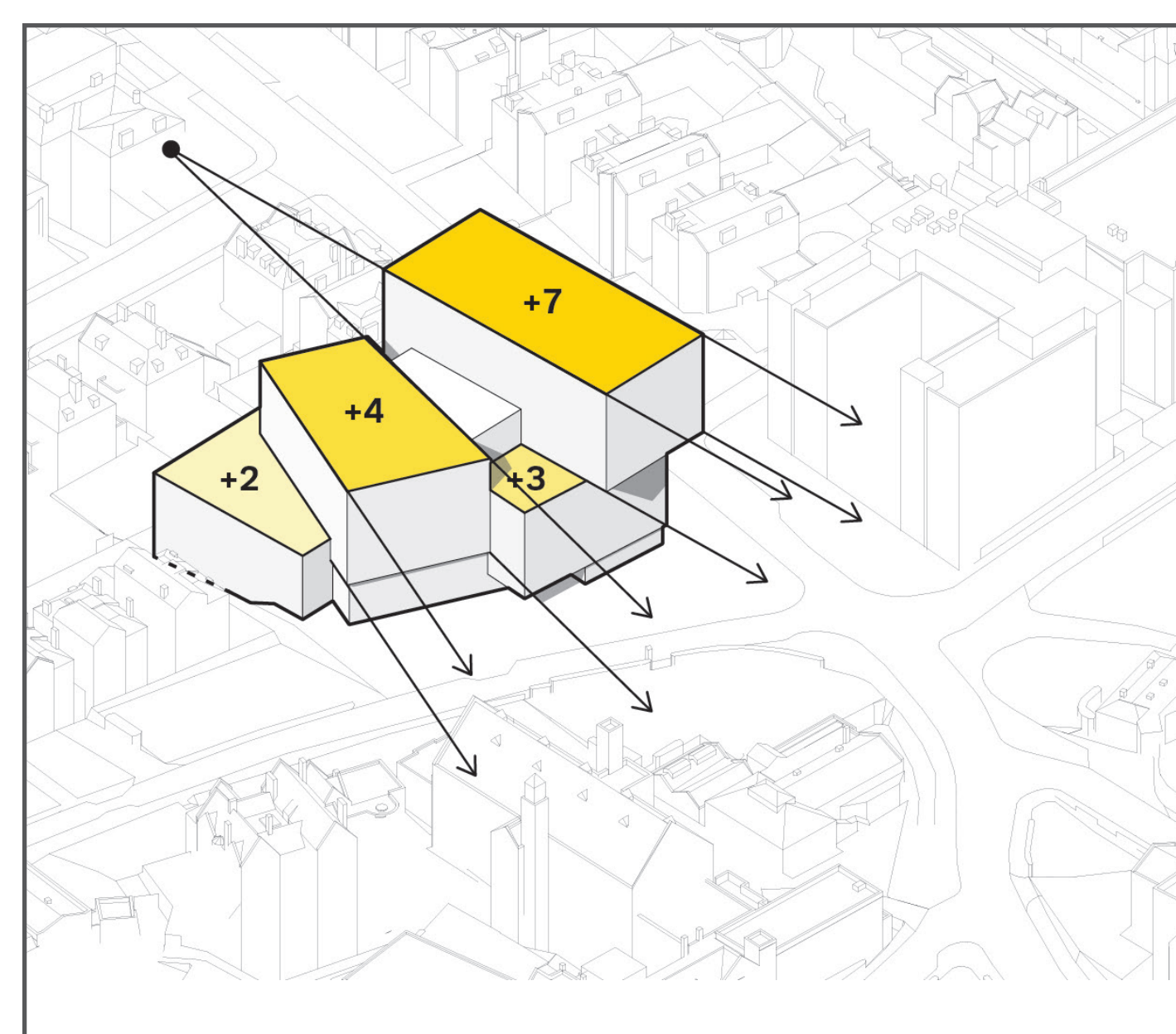
Key principles:

- Mediates the scale between the ‘domestic’ villas and the ‘civic’ University building
- Addresses the immediate context and surrounding urban grain
- Integrates the building into the wider urban landscape through greening
- Becomes the beating heart of the campus
- Completes the trio of buildings with the Wills Memorial Building and the Physics Building, marking the role of the University within the City
- Provides an architectural response to the character of its context and activities within
- Adds a contemporary twist to the existing vernacular

3 - New University Library

2 - HH Wills Physics Building

1 - Wills Memorial Building



Fanning and stepping

Fanning, twisting and stepping can be seen relating directly to the contextual scale, building tension and marking the prominence of the corner. The fanning form creates strong visual relationships with the surrounding streets while breaking away from the orthogonal street structure setting the design apart as a key landmark building.

Greening

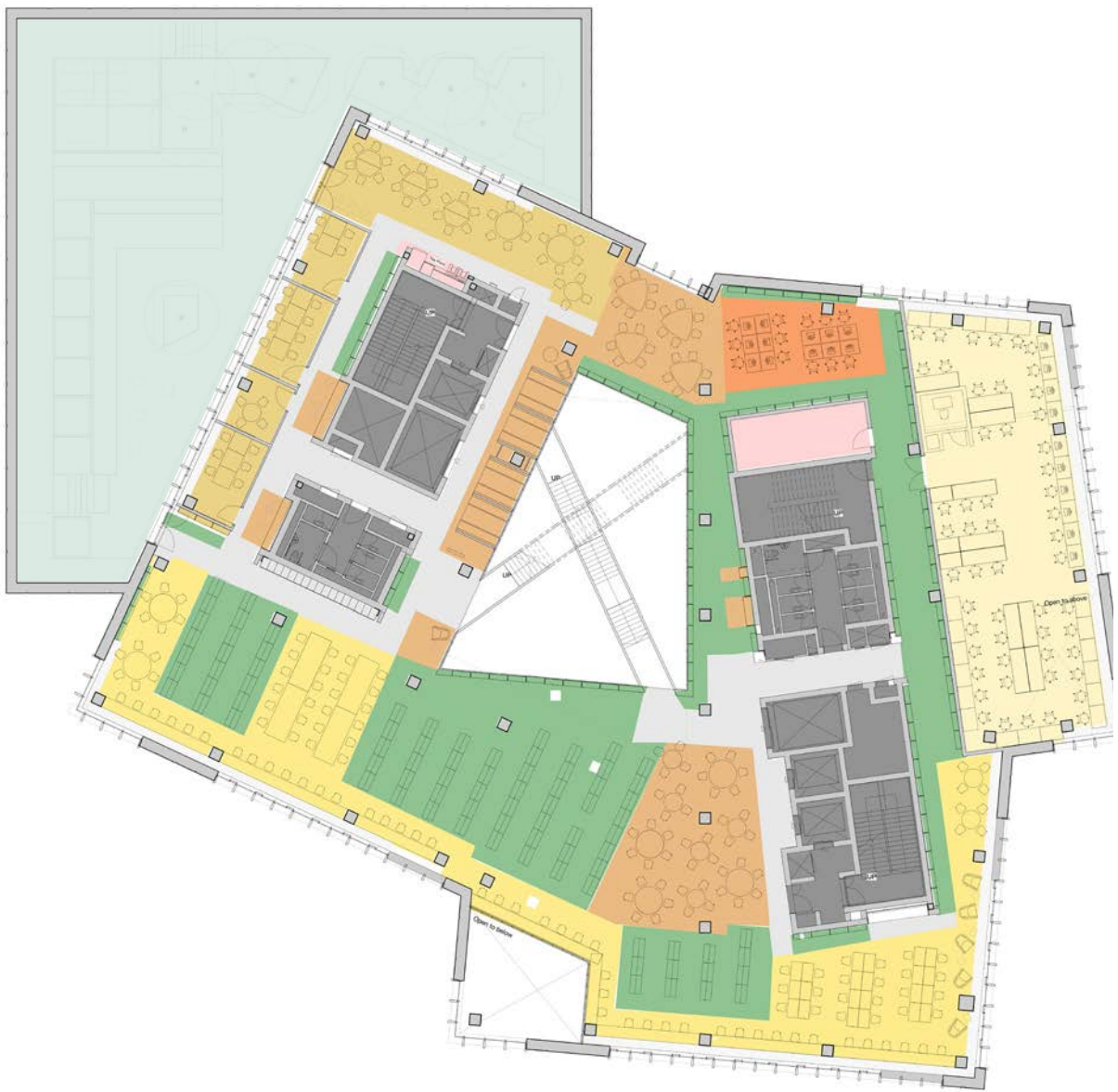
The building is seen as part of the urban landscape both vertically as well as horizontally. A series of open terraces help to connect the high quality planted external environment with spaces throughout the building.

Campus Heart

The design embodies the values of the Campus Heart programme, through creating more space, connections and involvement for staff, students and public as well as providing a building that is accessible to all and where everybody feels welcome..

5. Internal Layouts

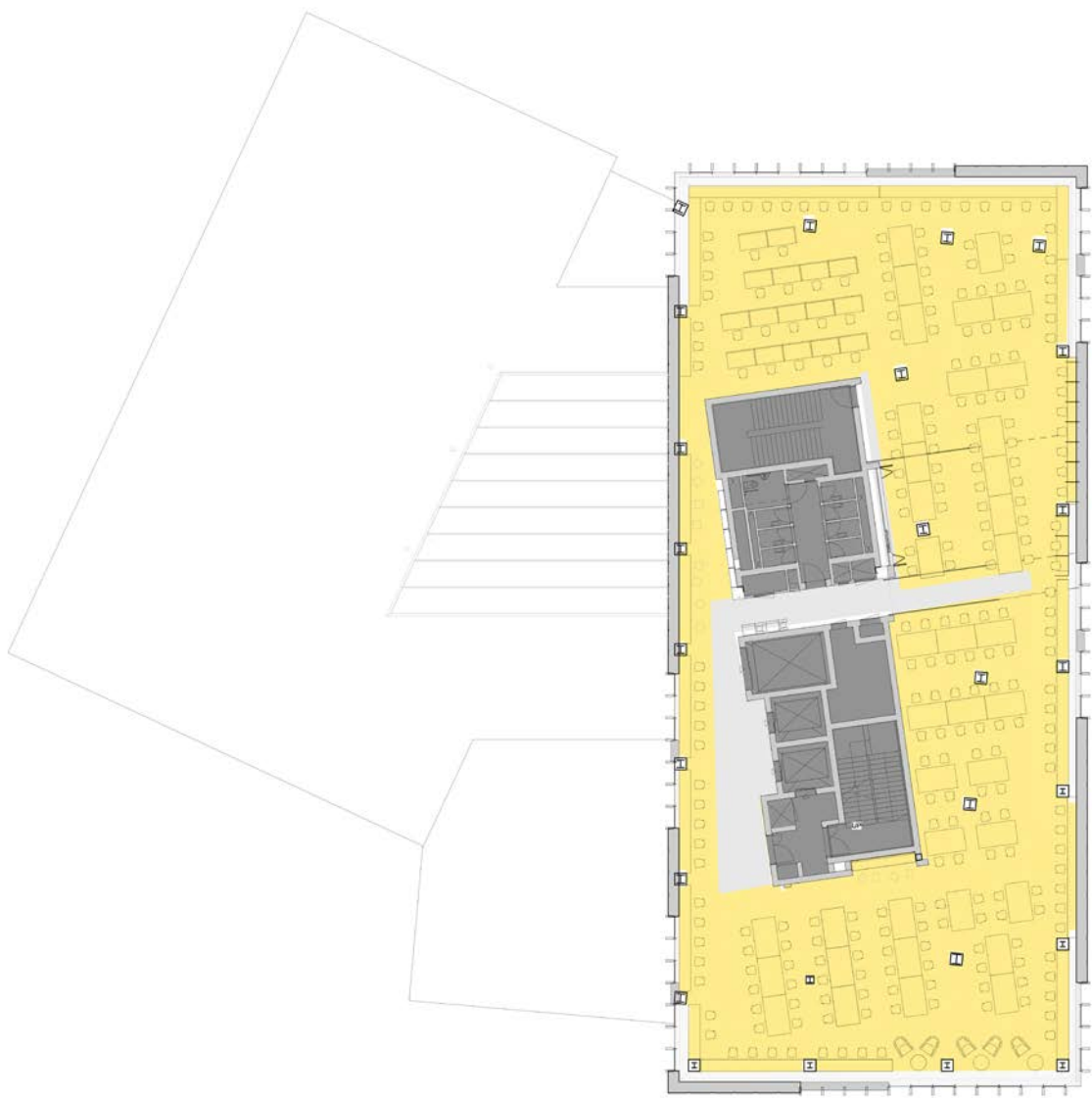
A Selection of Indicative Floorplans



Second Floor



Fourth Floor



Sixth Floor



Ground Floor

Legend

- Foyer
- Cafe
- Exhibitions and Events
- Collaborative Study Spaces
- Individual Study Spaces
- PCs
- Creative Lab/ Maker Space
- Centre for Cultural Collections
- Collections
- Terraces
- Library Staff
- WCs/ Stair/ Lift core

6. Elevations and Materiality

The façade design is a key element in achieving a low energy building and a comfortable internal environment that promotes health and well-being. This influences the choice of materials and how they are put together.

The material palette is clean and simple whilst also reflecting the weight and importance of this building and its prominent location.

Light coloured limestone is proposed as the main cladding material, as found on many Bristol buildings as well as key civic buildings throughout the UK.

The window areas will be clad in a high quality, low-emissivity/ energy-efficient glass designed to prevent heat escaping outside. The windows will be openable to allow natural ventilation whilst addressing any security concerns by restricting the size of the opening.



Precedent images of building facades



South Elevation: View from Elton Road looking North



West Elevation: View from Elton Road looking East

7. Landscape and Public Space

The external public space design creates a pedestrian friendly central square linking key destinations such as the New University Library, Senate House, Bristol Grammar School and Royal Fort Gardens.

The landscape, public space and building will create a single strong identity, reinforcing the legibility of the site and providing a welcoming pedestrian friendly arrival sequence.

Five key approaches are embedded within the emerging landscape and public space proposals for the library scheme:

- Nature Health & Well Being
- Reconnecting the Urban Grain
- Sustainable Design
- Heart & Identity
- Legacy

The landscape proposals recognise the aspiration to create strong inside-outside connections between the new University library and the wider public space. With this in mind, a series of external spaces have been created; providing a direct connection to internal spaces and allowing internal activities to spill out into the external environment.



Visualisation - Proposed public realm with Royal Fort Garden entrance in the foreground



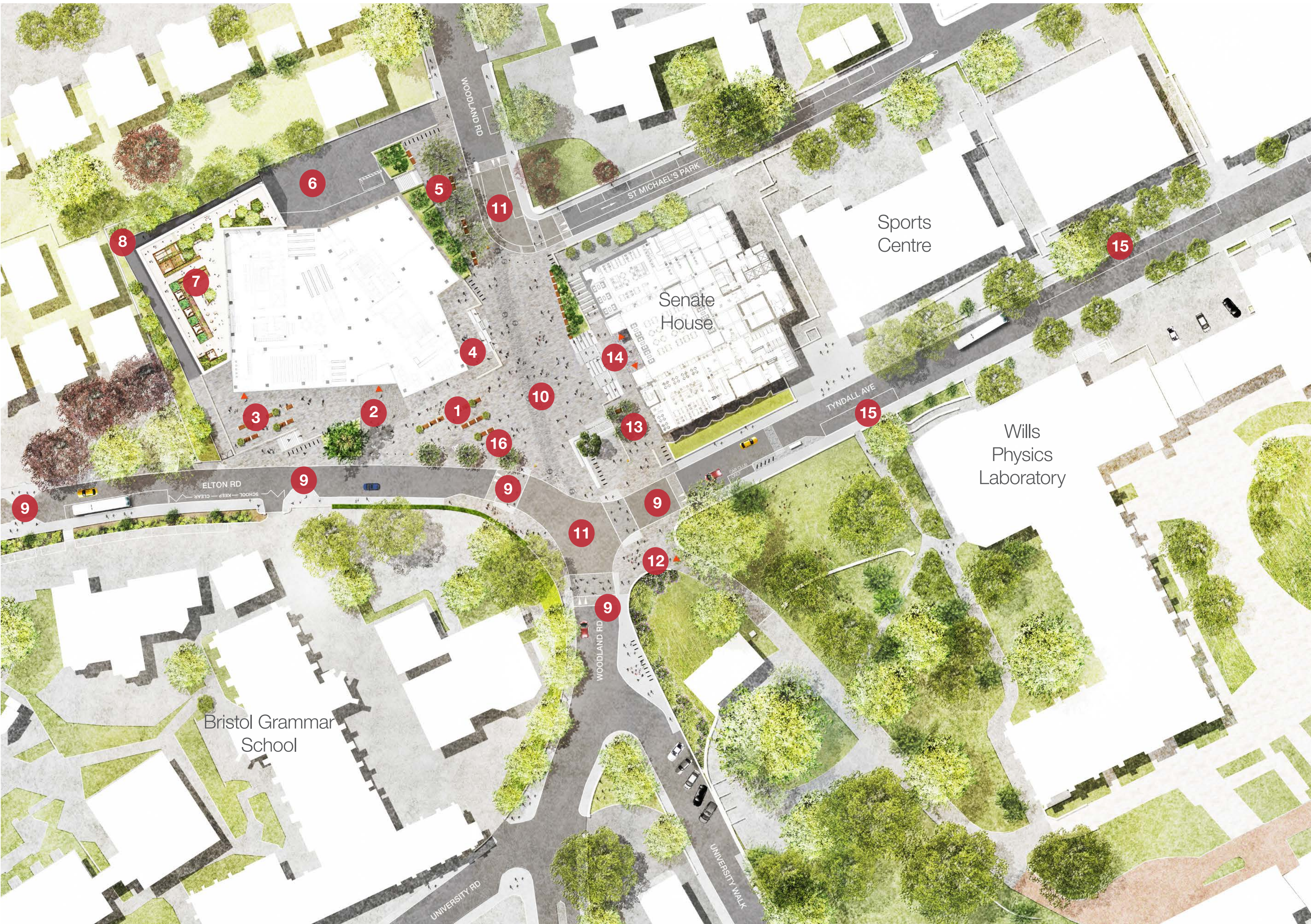
Visualisation - Facing the New Senate House entrance and proposed public realm



Visualisation - Proposed public realm between Senate House and the New Library

Key:

- 1 Square
- 2 Main Entrance to New University Library
- 3 Terrace
- 4 Cafe Terrace
- 5 Woodland Rd Gardens
- 6 Service Yard
- 7 Level 2 Terrace
- 8 Habitat Planting and Maintenance Route
- 9 Safe crossing point
- 10 New Public Space
- 11 Reconfiguration of road carriageways and junctions to provide an improved experience for pedestrians & cyclists and road calming measures
- 12 Royal Fort Gardens Improved pedestrian access
- 13 Senate House Terrace
- 14 Main Entrance to Senate House
- 15 Bus Stops
- 16 Accessible parking bay



8. Transport & Connections

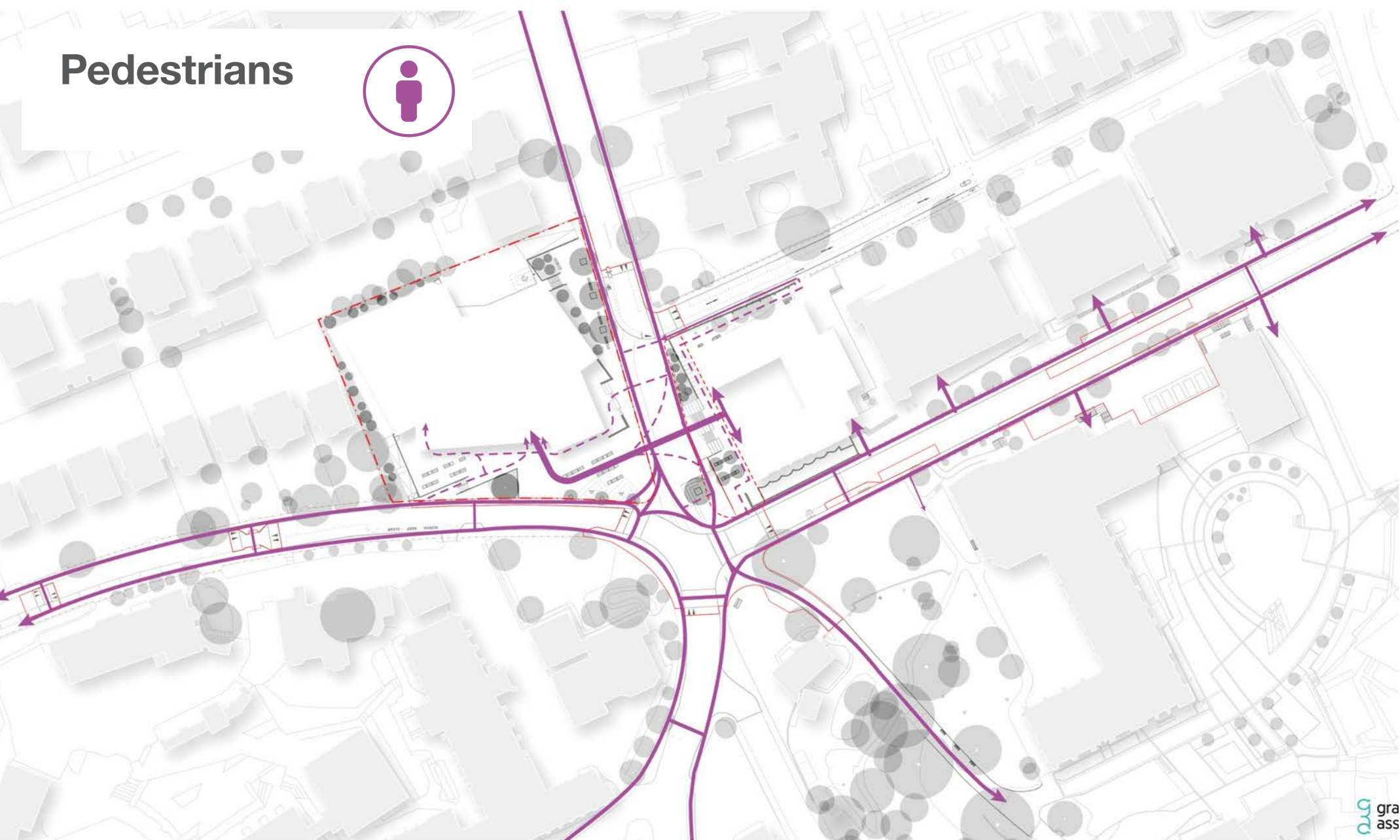
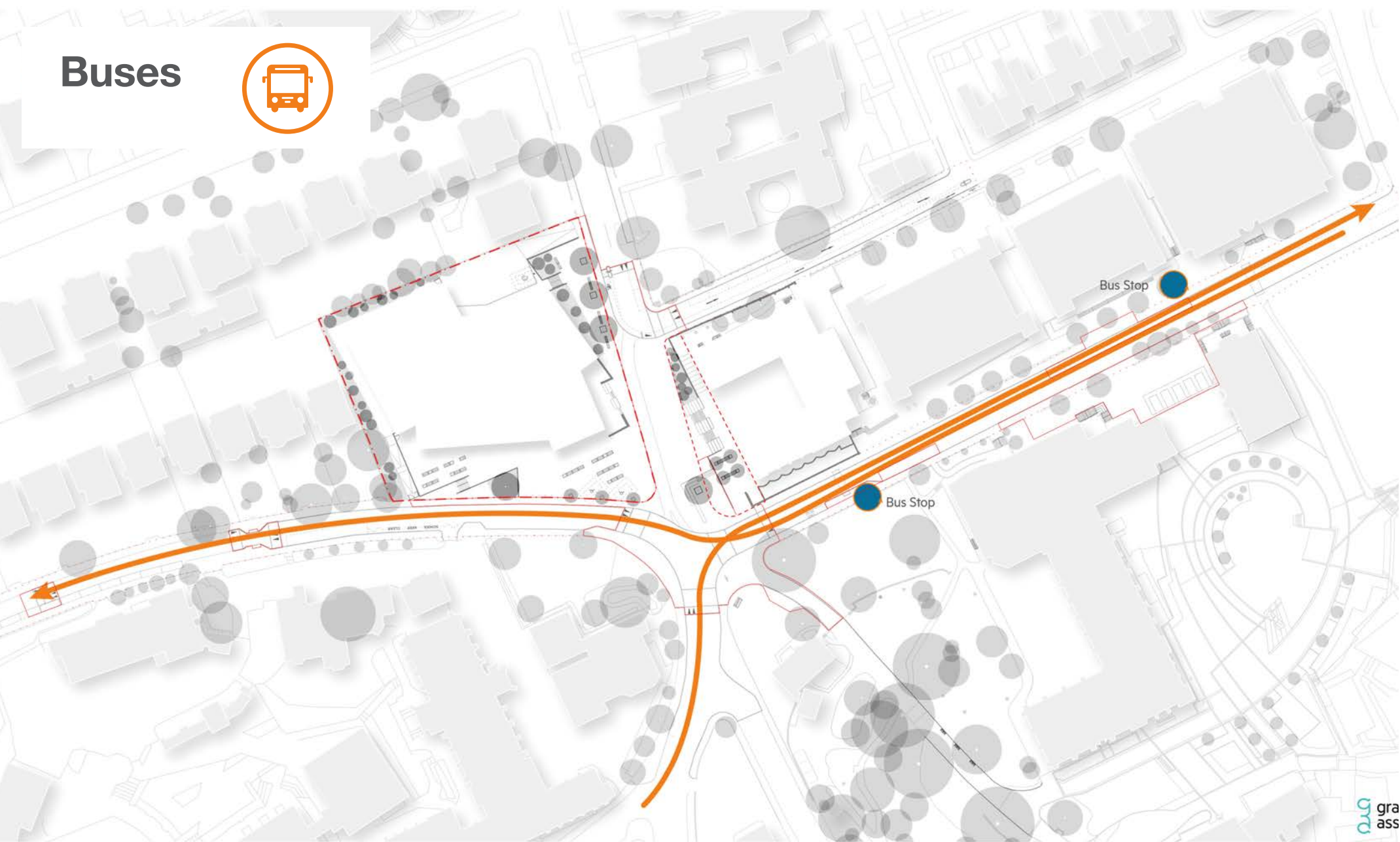
The overall objective of the highway design element of the project is to deliver an enhanced public space that responds to, and caters for, the changes in pedestrian and cycle movements associated with the proposed new University library.

The designs respond to the following key objectives:

- Increase provision for pedestrians and cycles;
- Reduce traffic speeds, and where possible, reduce traffic volumes;

- Enable essential vehicle trips such as for servicing, refuse collection, and for use by blue-badge holders; and
- Retain on-street public car parking provision where possible, recognising its importance to residents, visitors to the area and others.

The design team has consulted with a number of stakeholders in preparing the proposed highways layout, including Bristol City Council, Sustrans, and Bristol Grammar School.



Summary of Proposals.

The core element of the highway proposals is the closure of a section of Woodland Road to traffic between Tyndall Avenue and St Michael's Park. This closure allows pedestrian and cyclists to have priority in the immediate vicinity of the new University library, within a new civic square.

In addition the scheme proposes a number of other key changes. These include traffic calming measures, such as 'raised tables' and road narrowings, as well as changes to the way motor vehicles route through the area.

A new central bus hub for the Clifton campus is also proposed on Tyndall Avenue, serving both eastbound and westbound bus services, proposed bus routes are shown alongside pedestrian and cycle movements in the figures above.

The proposals include the introduction of 210 new cycle parking spaces at the new University library, with additional spaces located in the wider public space.

It is expected that the proposals would reduce the total volume of traffic which travels through the area. The planning application will be accompanied by

a Transport Assessment, which will ascertain the impact of traffic re-routing to use different roads and junctions. Where there are impacts on other areas, mitigation measures will be promoted by the University and by Bristol City Council.

9. Sustainability

The new University library is designed to have minimal impact on the environment.

The University of Bristol has a commitment to become carbon neutral by 2030 and the new library will complement this.

A BREEAM (Building Research Environmental Assessment Method) rating of 'Excellent' is being targeted.

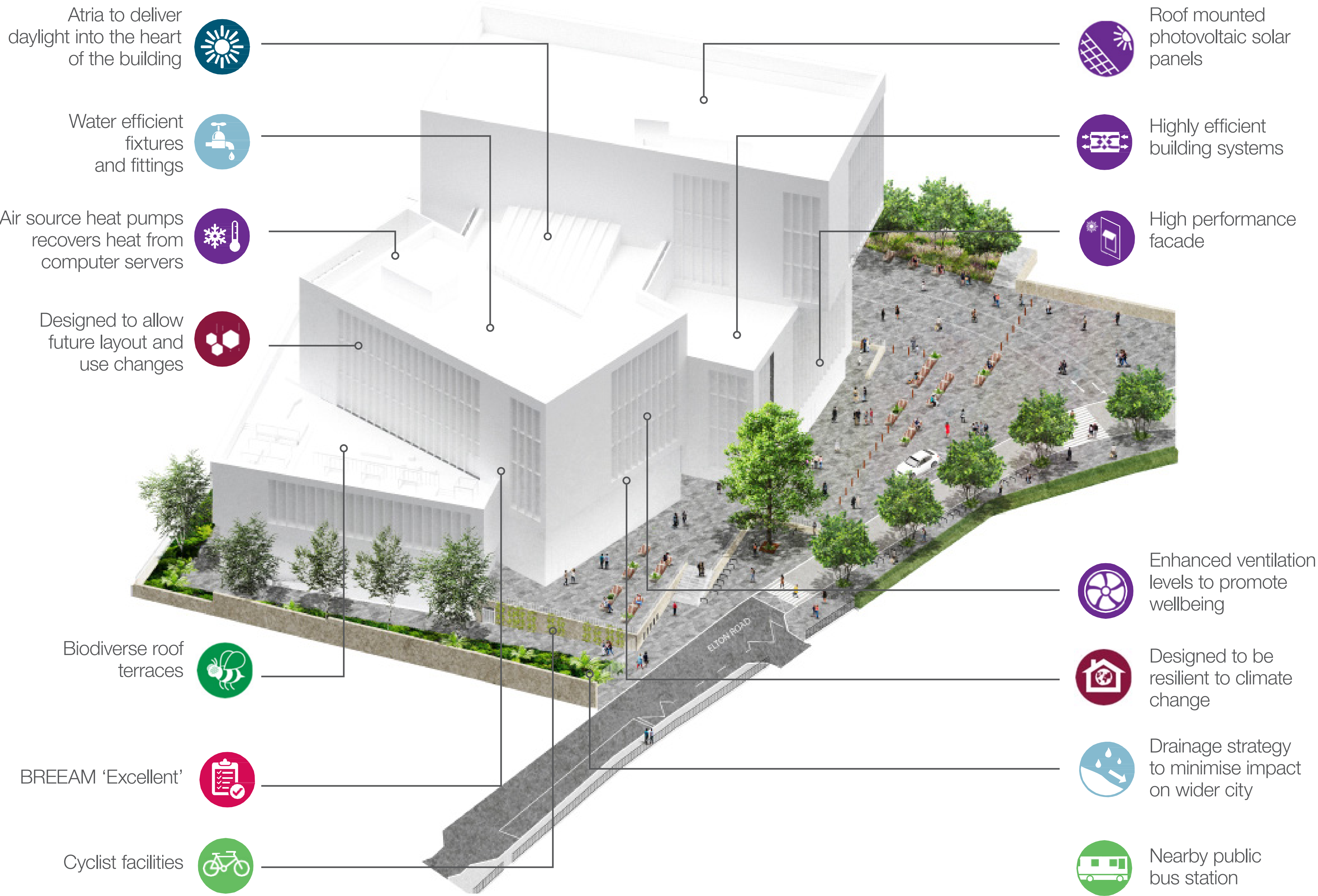
The building will be thermally efficient to reduce heating and cooling requirements. Material selections have considered embodied energy.

The proposals include photovoltaics for electrical generation. Electric heat pumps will provide heating and cooling.

Health and wellbeing of the occupants has been considered by using high ventilation rates of fresh air, enhanced daylight penetration and material selections.

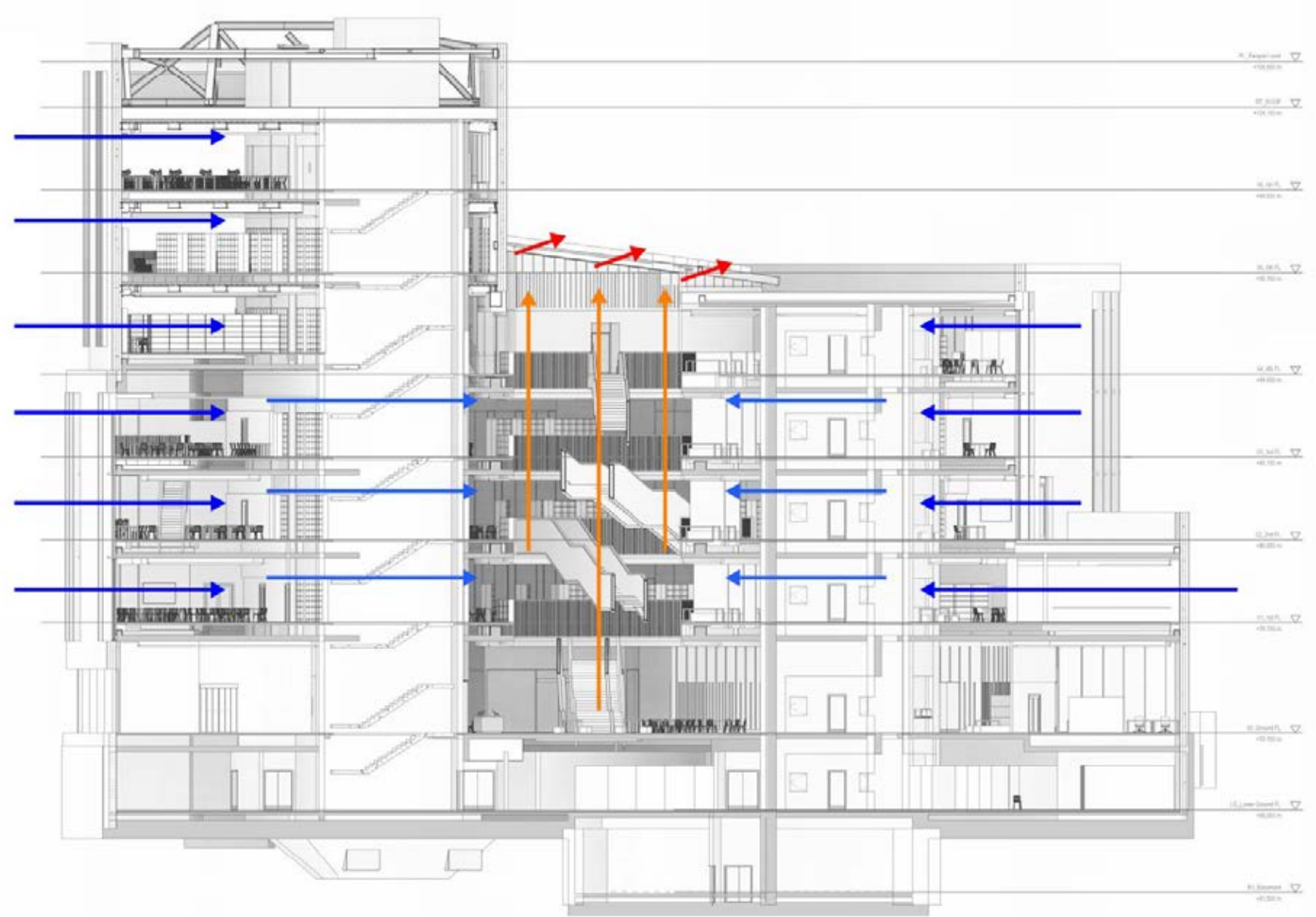
A fabric first approach has been intrinsic to the design of the building. The building is thermally very efficient using exposed concrete where feasible to help temper the internal environment.

Biodiversity of the external landscaping and terrace design helps bring nature into the scheme.



Passive Design Features:

- Natural cross ventilation
- Use of concrete soffit for thermal buffer
- Glazing ratio optimisation
- High performance glazing and external solar shading
- Mixed mode operation (opening windows)
- Low U-value building fabric
- High Air tightness



10. Share your view

In developing these proposals we have engaged with our students and staff, representatives of the local community and sought advice and feedback from officers at Bristol City Council through two pre-application enquiries.

Internal Engagement

Ongoing engagement and consultation with Library Services, the Campus Division, the staff and student community has been an intrinsic part of the development of the library design.

External Consultation activities to date

- First Pre-Application Enquiry submission to Bristol City Council – November 2018
- Initial Key Stakeholder Workshop – 13 December 2018
- Bristol Urban Design Forum Panel Review – 19 December 2018
- Ignit10n / Campus Heart Fest – Shaping Places workshop event – 21 March 2019
- Bristol Youth Council presentation & discussion session – 1 April 2019
- Bristol Youth Council presentation & discussion session - 10 July 2019
- Second Pre-application Enquiry submission to Bristol City Council – September 2019
- Public consultation from 1- 21 October 2019 including drop in sessions: Tuesday 1 October, Tuesday 15 October in the Foyer/ café area of Beacon House, The Triangle, Bristol BS8 1SE with the plans also available to view online, and both an online and paper copy survey
- Public exhibition from 1- 21 October 2019 at Beacon House, The Triangle, Bristol BS8 1SE & The Hawthorns, 14-16 Woodland Rd, Avon, Bristol BS8 1UQ

Next Steps

There are a number of ways for you to view our plans and share your views:

Online at www.bristol.ac.uk/library/new-library

The planning application is now available to view and comment on via the Council's planning portal, reference 20/00433/F

Email: development.management@bristol.gov.uk

